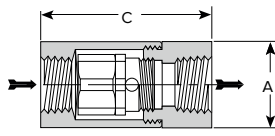


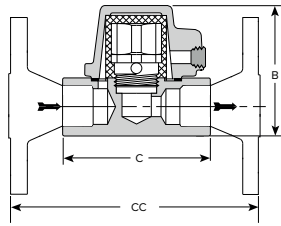
# CD-40 and CD-60 Series Controlled Disc Steam Traps

Carbon Steel

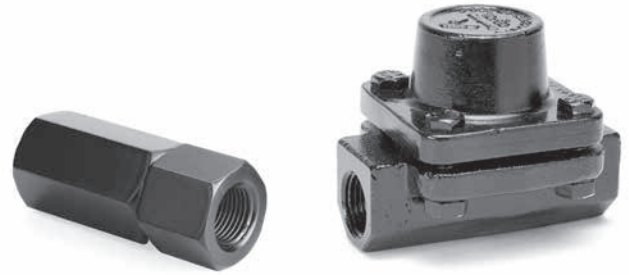
For Pressures to 41 bar...Capacities to 1 300 kg/h



CD-40 Series Trap



CD-60 Series Trap  
(CD-63 Model shown)



Steam Trapping and  
Steam Tracing Equipment

## Description

Armstrong CD-40 and CD-60 Series controlled disc traps contain a replaceable capsule, making it possible to renew a worn trap by simply replacing the capsule. A heating chamber in the shell ensures consistent operation. This steam jacket provides a relatively constant temperature in the control chamber regardless of ambient conditions. Cycling rate is controlled and does not increase when the trap is exposed to cold winds, rain or snow. CD-40 Series traps are also available with optional integral 0,045" perforated stainless steel strainer screens. CD-60 Series traps contain integral strainers with ratios of open area to inside area of pipe that equal or exceed those of most separate "Y" type strainers.

## Maximum Operating Conditions

Maximum allowable pressure (vessel design):  
Model CD-40 41 bar @ 260°C  
Model CD-60 41 bar @ 399°C

Maximum operating pressure: 41 bar at saturated steam temp.  
Minimum operating pressure: 0,7 bar  
Maximum back pressure: 50% of inlet pressure (recommended)

## Connections

Model CD-40 and CD-60 Screwed BSPT and NPT  
Model CD-60 Socketweld  
Model CD-60 EN 1092-1 or ASME B16.5 (welded)

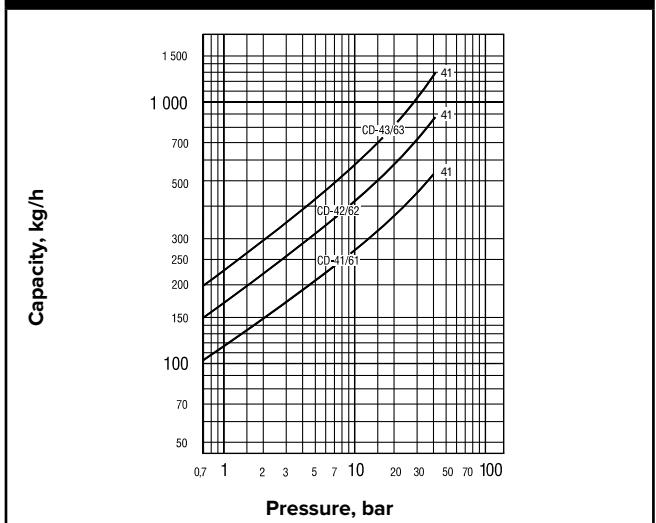
## Materials Model CD-40

Body: Carbon steel – C-1215  
Control chamber: Hardened stainless steel  
Disc: Hardened stainless steel  
Capsule body: Hardened stainless steel  
Strainer screen (option): Stainless steel

## Materials Model CD-60

Body: ASTM A216 WCB  
Cap: ASTM A216 WCB or ASTM A105  
Control chamber: Hardened stainless steel  
Disc: Hardened stainless steel  
Capsule body: Hardened stainless steel  
Strainer screen: 20 x 20 mesh stainless steel

Table ST-177-1. CD-40 & CD-60 Series Capacity



## Option

CD-40 Series integral strainer screen (0,045" perforated stainless steel). Capacities given are continuous discharge capacities in kilograms of hot condensate per hour at pressure differential indicated with condensate temperatures approximately 14°C below steam temperatures.

**Note:** CD traps can operate with minimum of 0,15 bar inlet pressure and a maximum of 80% back pressure. However, for best results, inlet pressure should not drop below 0,70 bar and back pressure should not exceed 50% of inlet pressure.

## Specification

Controlled disc steam trap, type ... in carbon steel. CD-60 includes integral strainer. Maximum allowable pressure 41 bar.

## How to Order

Specify:

- Model number
- Size and type of pipe connection
- Any options required

Table ST-177-1. CD-40 and CD-60 Series Trap (dimensions in mm)

Model No.	CD-41*	CD-42*	CD-43*	CD-61	CD-62	CD-63		
Pipe Connections	3/8"	1/2"	3/4"	1"	10	15	20	25
"A" Body Outside Diameter	31,7	31,7	41,3	60,3	—	—	—	—
"B" Height	—	—	—	—	66,7	66,7	87,3	108,0
"B" Face-to-Face (screwed & SW)	76,2	86,5	100,0	117,5	88,9	88,9	117,0	122,0
"C" Face-to-Face (flanged PN40**)	—	—	—	—	—	150	170	180
Weight in kg (screwed & SW)	0,3	0,8	1,9	1,2	1,1	2,2	3,1	
Weight in kg (flanged PN40**)	—	—	—	—	2,6	4,3	5,7	

\* Optional integral strainer available.

\*\* Other flange sizes, ratings and face-to-face dimensions are available on request.

All models comply with the Article 4.3 of the PED (2014/68/UE).

+ May be derated depending on flange rating and type.

All dimensions and weights are approximate. Use certified print for exact dimensions. Design and materials are subject to change without notice.