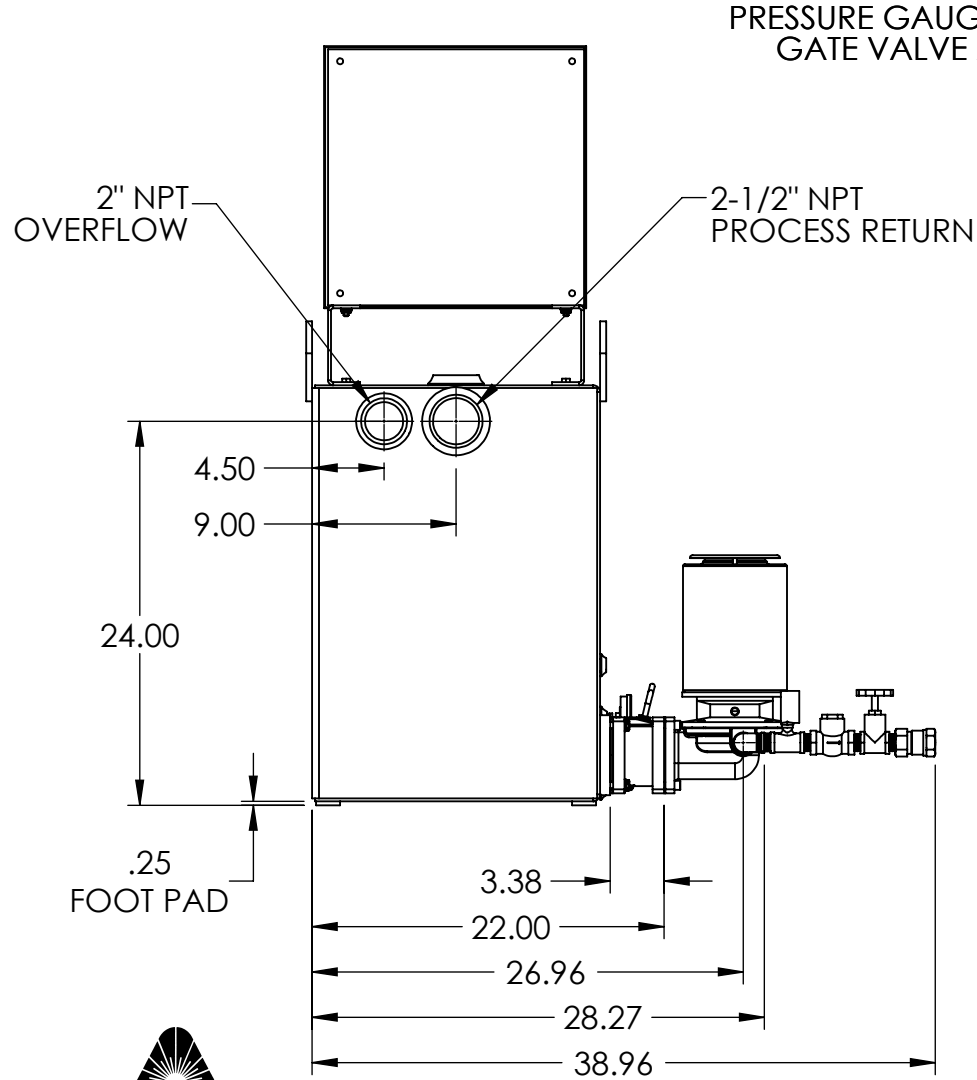
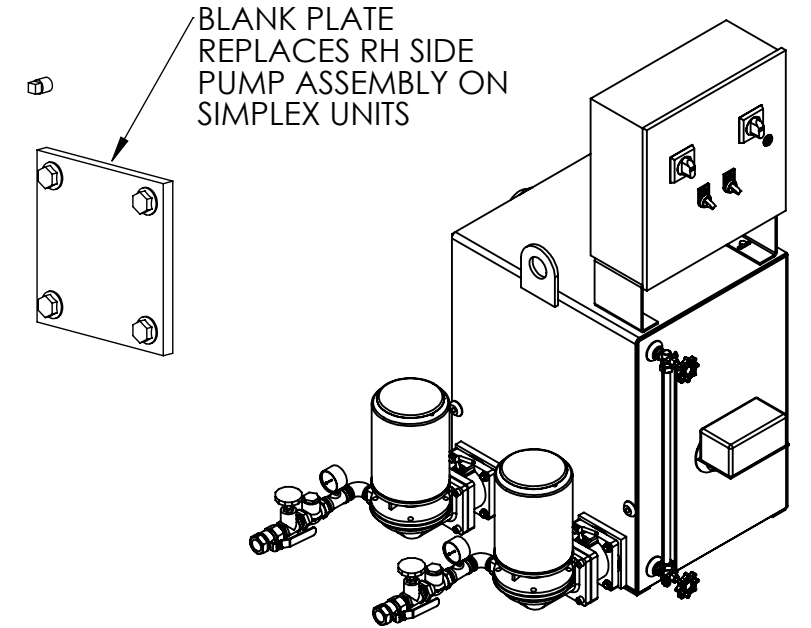
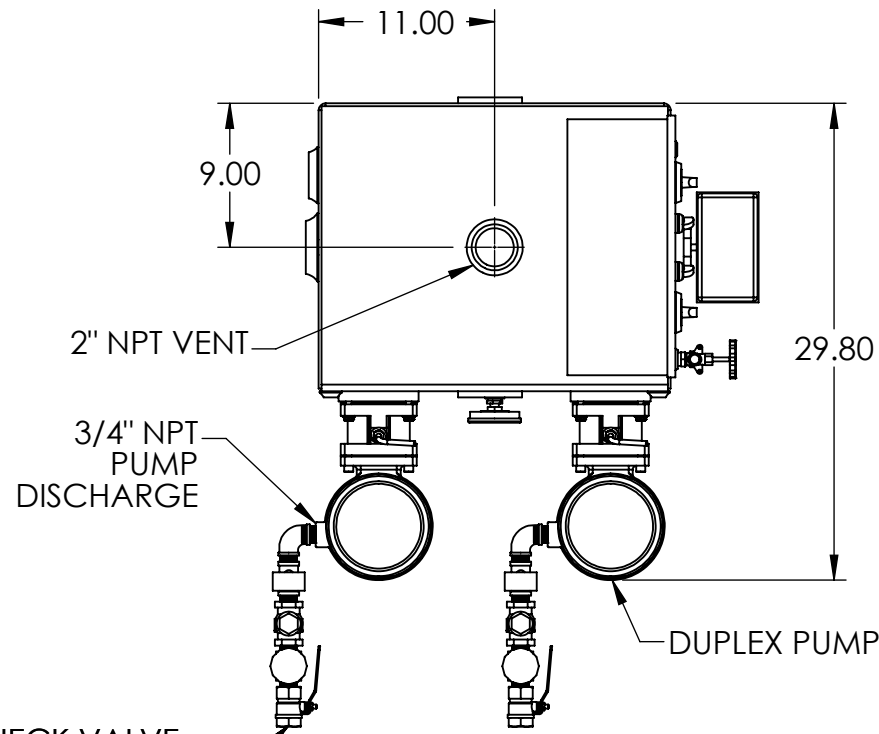


NOTES:

- TANK MATERIAL: STEEL
- ALL DIMENSIONS ARE ±0.25"
- DRAWING NOT FOR CONSTRUCTION
- CONSULT FACTORY AT TIME OF ORDER FOR CURRENT PRINT
- INLET BASKET STRAINER OR Y-STRAINER ALSO AVAILABLE

CONTROL PANEL OPTIONS ALSO AVAILABLE (NOT SHOWN):

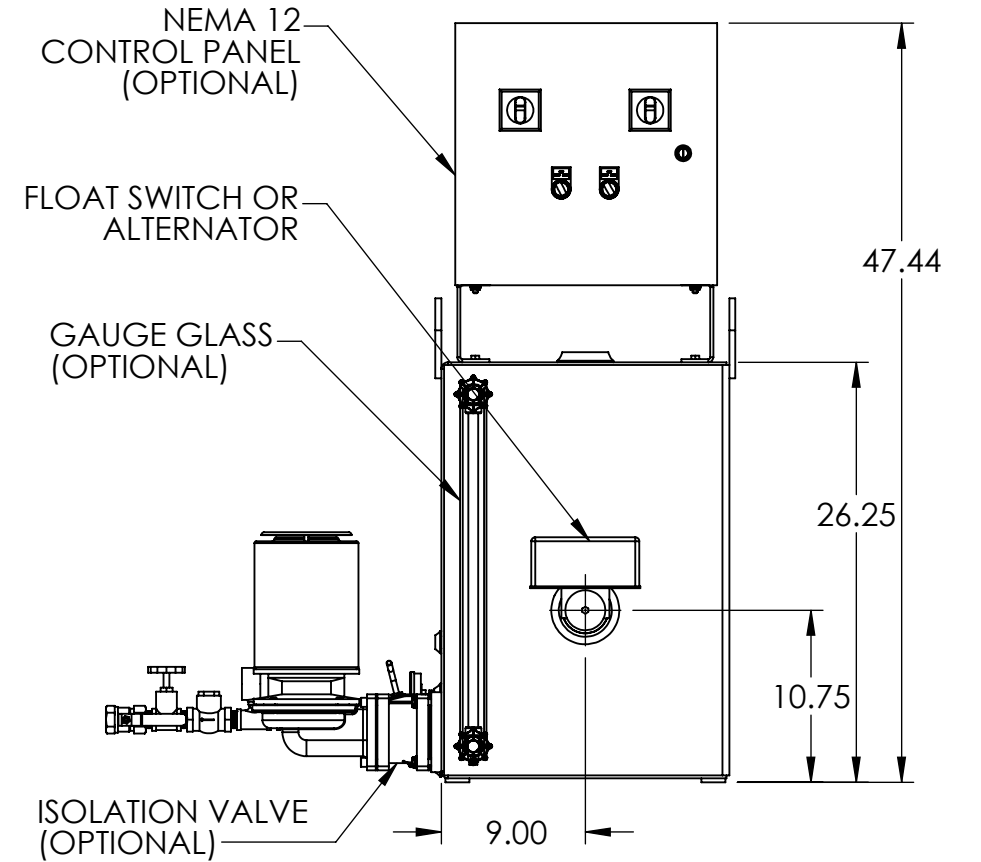
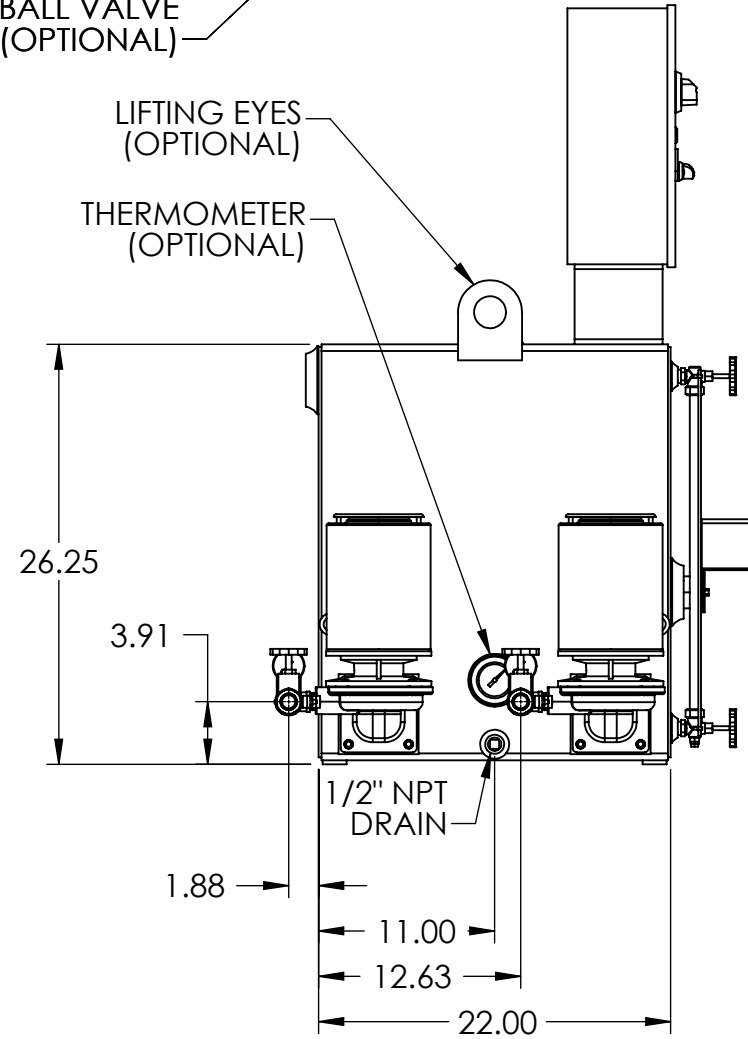
- NEMA 4 OR NEMA 4X OR NEMA 3R CONSTRUCTION
- ELECTRIC ALTERNATOR
- POWER ON LIGHT
- PUMP TEST BUTTON
- PUMP RUN TIME METER
- EXTRA DRY CONTACTS
- UL/CUL LABELED PANEL
- HIGH LEVEL ALARM HORN & LIGHT W/SILENCE SWITCH
- LEAD-AUTO-LAG SELECTOR SWITCH



PRESSURE GAUGE, CHECK VALVE
GATE VALVE AND BALL VALVE
(OPTIONAL)

LIFTING EYES
(OPTIONAL)

THERMOMETER
(OPTIONAL)



| REV | DESCRIPTION | ECN | NAME | DATE |
|-----|----------------|-----|------|-----------|
| A | Initial Design | | GJM | 3/16/2018 |

| PART NO: | Ref PartNo | NAME | DATE |
|----------|------------|------|-----------|
| | | GJM | 3/16/2018 |

| FABRICATION TOLERANCES UNLESS OTHERWISE SPECIFIED: DIMENSIONS ARE IN INCHES | DRAWN | THIRD ANGLE PROJECTION |
|---|--|------------------------|
| TOLERANCES: ANGULAR DIMENSIONS ±1° FRACTIONS ±1/32 | CHECKED | |
| TWO PLACE DECIMAL ±0.06 THREE PLACE DECIMAL ±0.030 | ENG APPR. | |
| | PRODUCT FAMILY HTSP Boiler and Condensate | |
| | PRODUCT CATEGORY | |

| TITLE | REV |
|--|-----|
| 45 GALLON SIMPLEX/DUPLEX 4100 SERIES "G" CONDENSATE PUMP | A |

| SHEET: 1 OF 1 | WEIGHT | DRAWING MAY NOT BE PRINTED TO SCALE. | DWG NO. |
|---------------|--------|--------------------------------------|---------------|
| | 279.35 | SCALE: 1:12 | 684.41045.00G |